

A different look at Port Meadow

**Wolvercote
Commoners'**
NEWSLETTER
November 2021

We have often written about the importance of the Commons and how it should be cared for, but do we all know how valuable it is? Those who use Facebook may have seen a recent post by Julian Cooper, our trusted Park Ranger, which illustrates so well the Commons' vital role in both carbon capture and management of flood control. We therefore thought it worth publishing here for those who may not have seen it. We all know how lucky we are to have the Commons on our doorstep but, as the poster shows, it's far more than just a park. The Commons are a designated SSSI (Site of Special Scientific Interest) and have been untouched for hundreds of years being recorded in the Domesday Book. Next time you walk out there it's worth knowing what's going on under your feet and how we can help it carry on its role. (If you would like to learn more about flood plains, their role and history go to: www.habitataid.co.uk/blogs/blog)

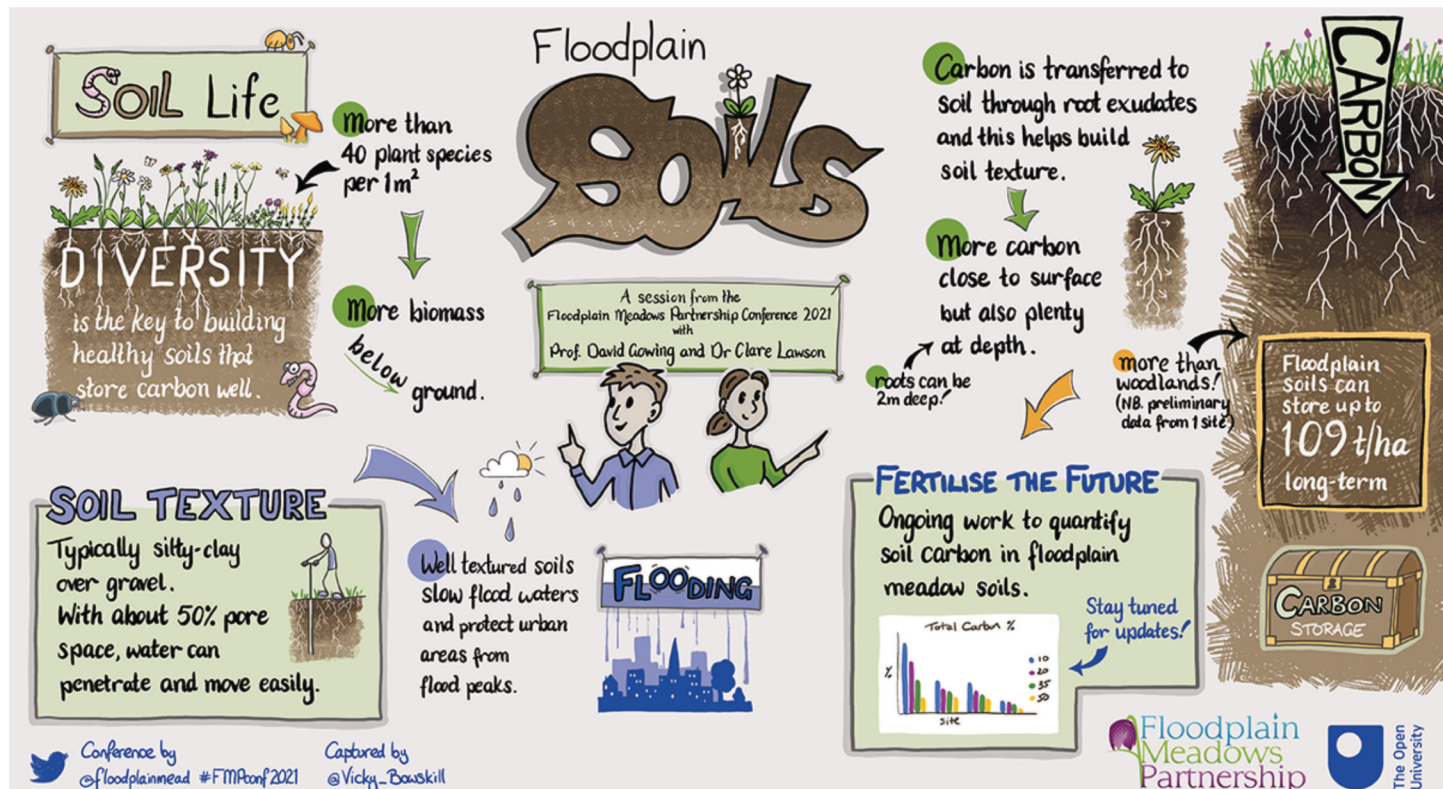


Illustration by kind permission of Vicky Bowskill

Two Treats from the Tree Group

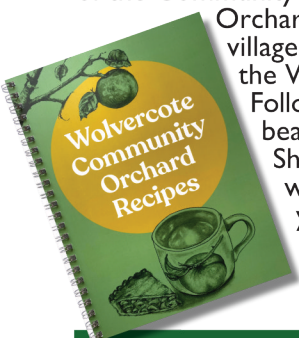
The Wolvercote Tree Group is publishing (just in time for Christmas) two delights extolling the joys of the Community Orchard. Firstly a book of Orchard Recipes submitted by villagers. It's now on sale for £5 at the Wolvercote Sunday Market.

Followed in a few weeks by a beautiful 2022 calendar at £5.50.

Showing trees throughout the seasons with photographs and poems by villagers. Get your copies from the Wolvercote Sunday Market.

Or order both by emailing wolvercotetreegroup@gmail.com

A perfect Christmas Present



Dates for your diary

Commoners' Half Yearly Meeting
Wednesday 24th November at 7.30

It will be held on Zoom.

If you would like to attend send an email for the Zoom link to:

wolvercote.commoners@yahoo.co.uk

Commoners' Carol Concert
Monday 13th December

We still hope to hold the concert, although things may alter due to Covid. So watch this space and the noticeboards. But STILL leave that night clear in your diary AND hope for the best!

If you would like this Newsletter emailed to you please email wolvercote.commoners@yahoo.co.uk

Don't forget Village Work Mornings second Saturday of every month

Meet outside the Village Hall at 10am (bring garden gloves, wellies and any gardening tools you have). Children welcome



www.wolvercotecommoners.co.uk – wolvercote.commoners@yahoo.co.uk

Chair: Mary Brown (07799 391816) Secretary: Eleanor Woods (07815 548351)

